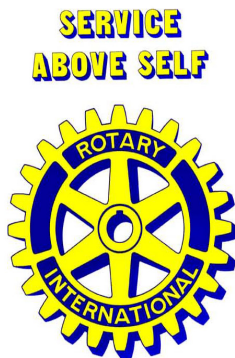


Chamber News

September 2017



Eastern Lake County
Chamber of Commerce



Eastern Lake County
Chamber of Commerce

On Thursday, September 28th at 11:30am, the Eastern Lake County Chamber of Commerce along with the Painesville Rotary will be holding a Legislative Candidates & Issues Forum at Quail Hollow Resort, 11080 Concord Hambden Road in Concord.

Candidates will be given a set, limited amount of time to introduce themselves and answer questions proposed by the membership.

Candidates running unopposed are invited to attend and will be introduced.

Issue Representatives will be given a set, limited amount of time to educate our guests on what issues will be on the November ballot.

Cost to attend is \$25 per person

RSVP online at www.easternlakecountychamber.org or call the chamber office at 440-357-7572. We ask that you RSVP by 9/21/17.



This event is sponsored by:

Erie Bank

Lake Health

Lantern of Madison

NMS – Certified Public Accountants

Watch our website for details on an upcoming Ribbon Cutting and Grand Opening at Pizza Roto's Newest Location in Concord Township.



2017 Board of Directors

Executive Board of Directors

President	Allen Weaver	Erie Bank
1 st Vice President	Ame West	West Orchards
2 nd Vice President	Chris Brill Packard	Lake Health
Treasurer	Chris Bartlett	Jones Battles Group
Past President	David Komjati	KeyBank

Board of Directors

Rita Camardo	Northwest Savings Bank
Sallie Christian	Layton Physical Therapy
Beth Debevc	Debonne Vineyards
Jim Gray	JPG Advisors
Mary Anne Hurley	Hurley State Farm
Jeff Hyrne	Lake County Nursery
Tara Isabelle	Huntington Bank
Lisa Schwentner Joles	Lew's Reliable Heat & AC
Thomas Mitchell	The Marshfield Group
Elias Nunez	Pollutro-Rossley Insurance Agency
Shannon Reglus	Lantern of Madison
Nicholas Rhodes	Asgard Development
Joshua Strickland	Dworken & Bernstein
Joey White	Handouts

Legal Liaison

Neil Conway Conway Land Title

Chamber Staff

Linda Reed	Executive Director
Kathleen Obrenski	Office Administrator
Katrina March	Membership Manager

Mission Statement:

The Eastern Lake County Chamber of Commerce exists to promote, support and guide the business and civic communities of which we serve.

Serving: Concord Township
Fairport Harbor
Grand River
Leroy Township
Madison Township
Madison Village
North Perry Village

Painesville City
Painesville Township
Perry Township
Perry Village



One Victoria Place, Suite 265A
Painesville, OH 44077
(440) 357-7572
Website: www.easternlakecountychamber.org

Members

NEWS

Book Release

By

Glenn R. Burkey

“The *First Class* Way”

*Does your business provide
a life style, or a life sentence!*

Glenn’s book is about those who want to start a business, whose businesses are stuck, who feel their business owns them instead of them owning their business, who aren’t having fun anymore, who can’t remember why they started their business, and a step by step process to address any of the above issues so you can enjoy a *First Class* life.

Glenn takes you on the 25-year personal journey he took to find out the answers.

Available on Amazon.com

Book Section under

Glenn R. Burkey

“The First Class Way.



Wit & Whimsy is celebrating their One Year Anniversary!

Stop by over Labor Day Weekend to check out the SALE! Great way to kick off your holiday shopping.

HOURS ARE:

Saturday, September 2 – 9:00 am to 5:00 pm

Sunday, September 3 – 11:00 am to 5:00 pm

**1940 Hubbard Road
Madison**

Thank You To Our 2017 Golf Outing Sponsors

We truly value and appreciate your support!

Aladdin Rents
BB Bradley Company
Bubbles & Swirls
City of Painesville
Country Club Rehabilitation at Ashtabula
D&S Automotive
Debonne Vineyards
Dworken & Bernstein
Enterprise Title
Federico Tire
Global Real Estate Advisors
Handouts
Holiday Inn Mentor
Huntington Bank
Jacks Pools & Spas
Lake County Safety Council
Lakeland Community College East
LBL Printing
Lubrizol
Mentor Ridge Health & Rehabilitation
Northern Dental Specialists
Painesville Credit Union
Pike's CARSTAR Collision
R.W. Sidley
Richmond & Richmond Insurance
Sievers Security
Third Federal Savings
Wagon Wheel & Max's Carry Out
Zito Insurance
Western Reserve True Value

Andover Bank
Benedict Insurance Agency
Burgess & Niple
Consolidated Investments
CT Consultants
Dawn Spoor
Deepwood Industries
Edward Jones Investments - David LeMond
Erie Bank
First Federal Lakewood
Grand River Cellars
Hardy Industrial Technologies
Howard Hanna - Stacey Marinelli
Hurley State Farm
JBI Painting & Powerwashing
Lake Health
Lantern of Madison
Lew's Reliable Heating & AC
Madison Veterinary Hospital
Mexican Food Specialists
Northwest Savings Bank
Perry Dairy Queen
Quail Hollow Resort
ReMax Results - Greg Gilson
Senator John Eklund
Symphony at Mentor Memory Care
Turf Pride Lawncare
WINT Radio - Spirit Media
Harry Buffalo

THANK YOU



The following organizations have recently made an important investment in their business by joining their chamber. We thank them and hope you will consider them for all your personal and professional needs.

ADVERTISING & MEDIA

HEADLANDS DESIGN & ADVERTISING

OLEG KADERLY

7200 South Brewster Place
Concord, OH 44077
440-520-8525

www.headlandsdesign.com

Description: Founded in 2017, Headlands Design & Advertising is a leading provider of advertising products and services to various markets, as well as public sector. We are a debt free, privately held limited liability partnership based in Cleveland, OH.

Close collaboration is the foundation of our business. Our Team members work together in a cooperative and encouraging environment, where colleagues are constantly challenging each other to strive for more creative and edgy solutions. We believe that the quality of our team and work is our most important asset and differentiator.

ASSISTED LIVING CENTER

VISTA SPRINGS QUAIL HIGHLANDS

MICHELLE KILKER

7960 Auburn Road
Concord, OH 44077
440-867-9118

www.vistaspringsliving.com

Description: A new generation of family-centered and resort-styled assisted living and memory care/ Alzheimer's caregiving.

CONTRACTORS/SCAFFOLDING

SCAFFCO SCAFFOLDING & SUPPLY COMPANY

JOHN DOLCE

7661 Crile Road
Concord, OH 44077
440-352-4844

www.scaffco.net

Description: Full-service scaffold company.

Renting, delivering, picking up, erecting, dismantling and selling scaffold are what we do best. Scaffolding-Rental, Sales, Service company.

INSURANCE SALES

CALLENDER INSURANCE AGENCY

FREDERICK POLLUTRO

161 North State Street
Painesville, OH 44077
440-354-9566

www.callenderins.com

***Welcome to the
Eastern Lake County
Chamber of Commerce!***



council of smaller enterprises

Join the Greater Cleveland Partnership and COSE for BizConCLE 2017 October 12, 2017

Cleveland's only convention for small and middle market companies to learn, network and grow.

BizConCLE is a unique education and networking experience exclusively designed for small and middle-market company CEOs, C-Suite, and their employees. The full-day convention includes 3 nationally-recognized keynote speakers, 2 general sessions led by regional business and community leaders, and 10 hands-on workshops in areas like Talent, People and HR; Marketing, Customers and Branding; Business Growth, Sales & Financials; and Owner, Leader and Team Development. There's also a full exhibit hall, interactive show floor and multiple opportunities to connect and share ideas through exclusive networking experiences.

BizConCLE will provides attendees with the resources needed spark creativity, stay ahead of the competition and take their company to the next level.

Attendee titles include:

- Business Owner
- President
- Entrepreneur
- CEO
- CFO
- CMO
- Vice President
- Marketing Director and Manager
- HR Director and Manager
- Business Development Manager

Contact the GCP Events team at events@gcpartnership.com or call 216-592-2390 to register

Nominations Now Open for Eastern Lake County Chamber of Commerce Awards 2018

The Awards Banquet honoring our award recipients will be held Friday, 1/26/18, from 6pm to 10pm at LaMalfa.

As we move forward with our blended chambers, we carry on our history of providing recognition to those citizens, businesses and organizations that go above and beyond. Anyone may send in a nomination! Please make your nomination legible and be as specific as possible. The more details you provide to our nominating committee, the more persuasive you will be!

The deadline to nominate is October 31, 2017.

Heritage Award:

This award is presented periodically. The nominee should be a person/organization/business/industry who demonstrates superior commitment and achieves positive results in partnership with the community.

Business of the Year:

The nominee should be a business/industry who 1) gives time, money, resources, etc. back to the community, 2) Operates a successful business, 3) Promotes business development in the Eastern Lake County area. The business principal or organization must have demonstrated community involvement and/or made civic contributions. The award focuses on a business headquartered in Eastern Lake County regardless of size. The nominee should be a member of the Chamber of Commerce.

Citizen of the Year:

The recipient shall be someone who 1) has actively helped his/her community, 2) demonstrates devotion to the general welfare of the community, 3) looks first at what they can do for others and their community, 4) is a leader capable of getting others involved, 5) has demonstrated extensive and diverse participation, leadership and support in public and/or private civic endeavors over a period of years. All selections are made without regard to race, color, creed, gender, age or national origin.

Please email your nomination to linda@easternlakecountychamber.org

OR mail to: Eastern Lake County Chamber, Attention: Linda Reed, One Victoria Place, Suite 265A, Painesville, OH 44077

Please be sure to include contact info for the business/person/organization that you are nominating as well as your contact information



FREE perk with your membership



This is a great opportunity to network! Every member gets 30 seconds to say whatever you want about your business. Members can bring business cards, literature, flyers, and a door prize to promote your business and keep the event fun.

Thursday, September 7, 2017

8 to 9 am

Project Hope

25 Freedom Road

Painesville

Thursday, September 21, 2017 - [DECAF](#)

8 to 9 am

Fast Signs

7471 Tyler Blvd.

Mentor



Wednesday, September 27, 2017

8 to 9 am

Grand River Academy

3042 College St.

Austinburg

Wednesday, October 25, 2017

8 to 9 am

The Grounds

304 East Main St.

Geneva

To help us better serve you – please remember to make a reservation. PLEASE NOTE: Cost to non-chamber members is \$10 (cash or check only) and must be paid at the door - receipts will be available at registration



Think Manufacturing Career Expo Sponsorship Form

Date:

Thursday, October 5th, 2017

Time:

**8:00 AM - Booth Setup
for Sponsors**

**9:00 AM - Breakfast
with Manufacturers**

**10:00 AM - 1:00 PM
Student Workshop
Program**

Location:

Wickliffe High School

2255 Rockefeller Rd

Wickliffe, OH 44092

Hosted By:



Interested in promoting your company to a large group of manufacturers and/or students from Lake County? The 5th Annual Think Manufacturing Career Expo shows teachers, students and parents the rewarding opportunities available in manufacturing within Lake County.

Sponsorship Level_____

Company Name_____

Contact Name_____

Email (Required)_____

Phone_____

Address_____

City_____ Zip_____

***Please send or drop off 70 pieces of promotional materials/giveaways for manufacturer goodie bags to:**

Willoughby Western Lake County Chamber of Commerce
28 Public Square, Willoughby, OH 44094 (440) 942-1632

*Send a high-quality file of your company logo to
dswan@wwlcchamber.com*

**Make check payable to: WWLC Chamber of Commerce
28 Public Square, Willoughby, OH 44094
By September 1, 2017**



Sponsorships

Presenting Sponsor: \$1,500 (EXCLUSIVE)

- Two minute presentation at breakfast.
- Logo prominently placed on thinkmfgexpo.com website with link to your website.
- Your promotional material included in guest tote bag.
- Two name badges that distinguish your company representatives.
- Your logo prominently placed on event banner.
- * *One FULL-PAGE ad.*
- * *Logo and Presenting Sponsor title on registration form going to all Lake County Chamber members.*
- * *Premier complimentary double booth space at event.*
- * *Exposure in e-mails, all on-site signage.*
- * *Featured as a Presenting Sponsor on all Social Media campaigns.*

Breakfast Sponsor: \$1,000 (EXCLUSIVE)

- Two minute presentation at breakfast.
- Logo prominently placed on thinkmfgexpo.com website with link to your website.
- Your promotional material included in guest tote bag.
- Two name badges that distinguish your company representatives.
- Your logo prominently placed on event banner.
- * *One HALF-PAGE ad.*
- * *Logo included in program.*
- * *Logo and Breakfast Sponsor title on registration form going to all Lake County Chamber members.*
- * *Exposure in e-mails, on-site signage.*
- * *Premier complimentary booth space at breakfast.*

Registration Desk Sponsor: \$1,000 (EXCLUSIVE)

- Two minute presentation at breakfast.
- Logo prominently placed on thinkmfgexpo.com website with link to your website.
- Your promotional material included in guest tote bag.
- Two name badges that distinguish your company representatives.
- Your logo prominently placed on event banner.
- * *One HALF-PAGE ad.*
- * *Logo included in program.*
- * *Logo and Registration Desk Sponsor on Registration form going to all Lake County Chamber members.*
- * *Exposure in e-mails, on-site signage.*
- * *Premier complimentary booth space at event.*

Gold Sponsor: \$750 (2 Sponsors)

- Two minute presentation at breakfast.
- Logo prominently placed on thinkmfgexpo.com website with link to your website.
- Your promotional material included in guest tote bag.
- Two name badges that distinguish your company representatives.
- Your logo prominently placed on event banner.
- * *One HALF-PAGE ad.*
- * *Logo included in program.*
- * *Logo and Gold Sponsor title on registration form going to all Lake County Chamber members.*
- * *Complimentary booth space at event.*
- * *Exposure in e-mails, all on-site signage.*

Student Workshop Sponsor: \$750 (4 Sponsors)

- Two minute presentation at breakfast.
- Logo prominently placed on thinkmfgexpo.com website with link to your website.
- Your promotional material in guest tote bag.
- Two name badges that distinguish your company representatives.
- Your logo prominently placed on event banner.
- * *One HALF-PAGE ad.*
- * *Logo included in program.*
- * *Complimentary booth space at event.*

Tote Bag Sponsor: \$500 (1 Sponsor)

- Two minute presentation at breakfast.
- Logo prominently placed on thinkmfgexpo.com website with link to your website.
- Your promotional material in guest tote bag.
- Two name badges that distinguish your company representatives.
- Your logo prominently placed on event banner.
- * *One HALF-PAGE ad.*
- * *Logo included in program.*
- * *Complimentary booth space at event.*

Program Sponsor: \$500 (1 Sponsor)

- Two minute presentation at breakfast.
- Logo prominently placed on thinkmfgexpo.com website with link to your website.
- Your promotional material included in guest tote bag.
- Your logo prominently placed on event banner.
- * *One HALF-PAGE ad.*
- * *Logo included in program.*

Supporting Sponsor: \$150

- Your promotional material included in guest tote bag.
- Logo included in program.

ENERGY SAVINGS WILL PAY FOR YOUR EFFICIENCY PROJECTS

Unlocking Cash Flow for Your Business



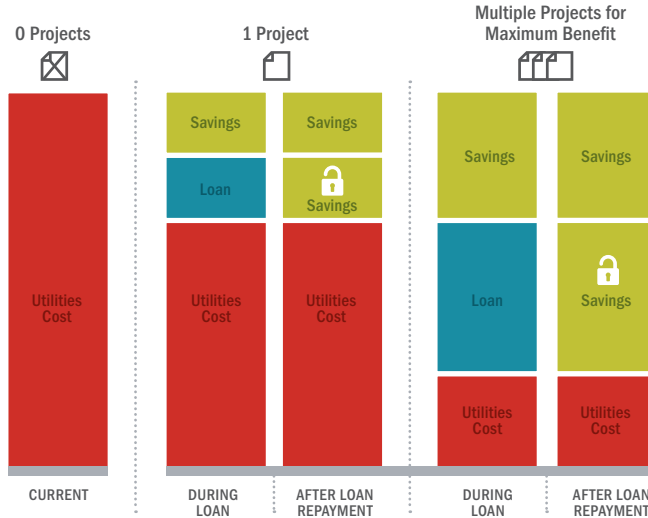
Do you want your business to grow while reducing expenses?

Whether it's energy-efficient lighting, or a top-to-bottom overhaul, energy efficiency upgrades can help your business more than offset rising utility costs. Financing solutions exist that will help your company add money to the bottom line.

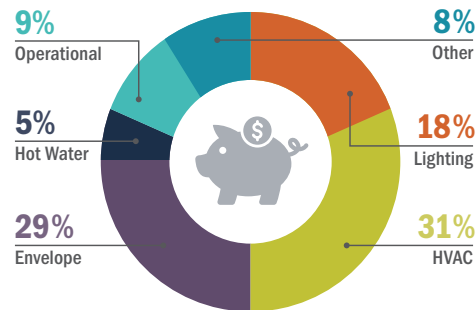
TIME IS MONEY. You're wasting energy and money every day you wait to act on the savings identified in your report. Your investment will generate savings well beyond the term of the loan.



UNLOCK CASH FLOW



ENERGY SAVINGS OPPORTUNITIES BY CATEGORY



POOR CASH FLOW IS ONE OF THE BIGGEST REASONS BUSINESSES FAIL



ENERGY EFFICIENCY IS THE SINGLE LARGEST WAY TO ELIMINATE WASTE, REDUCE EMISSIONS, AND SAVE MONEY



DID YOU KNOW?

20-30%

IS THE AVERAGE ENERGY SAVINGS FROM A WHOLE BUILDING RETROFIT

30%

AN AVERAGE OF OF ENERGY CONSUMED IN COMMERCIAL BUILDINGS IS WASTED



ENERGY EFFICIENCY UPGRADE BENEFITS

BUILDING VALUE



OVERALL BUILDING QUALITY



INCREASE CAPACITY



REINVEST DOLLARS SAVED



COMFORT



CONDITIONS QUALITY (example: lighting)



REDUCE MAINTENANCE



PRODUCTIVITY



Fall Tasting After Hours

Lake County's Premier Chamber Event



Come on out to our Fall Tasting After Hours event this September, as we bring together many of the local Northeast Ohio Chambers under our roof! This isn't your average networking event; this is going to be a fun, after-work gathering among local professionals. Don't be the one who misses out!

Date and Time Thursday, September 14th, 2017 5:30pm – 7:30pm

Location D&S Automotive | 7588 Tyler Boulevard | Mentor, OH 44060

Complete with giveaways, free food and drinks (yes, that includes beer and wine!), and some laid-back networking, you'll want to mark this event in your calendar today!

Top Reasons to Attend:

1. Network with great people from local businesses and chambers
2. FREE food and drinks
3. Chance to win great prizes

REGISTER ONLINE AT <http://www.dsautomotive.com/chamber-event/>





CHICKEN, EGGS, BANKRUPTCY AND DIVORCE

If you are going through a divorce and need to file a bankruptcy petition, should you file with your spouse? Or on your own? Should you file the bankruptcy petition first? Or should the divorce be completed? As with most questions you ask an attorney, the answer is "it depends."

If you and your spouse are on good terms and can work together, there can be advantages, and it often makes sense, to file a Chapter 7 bankruptcy before filing for divorce. A Chapter 7 bankruptcy would allow the both of you to wipe out your debt and ensure a fresh start for the both of you. There are some exceptions of debts that cannot be discharged in a bankruptcy such as student loans, alimony, child support and certain taxes. A Chapter 7 bankruptcy also ensures that your debt will be handled and that the marital property will be split up.

One of the advantages of filing a Chapter 7 bankruptcy with your spouse before filing a divorce is the cost. When filing a joint bankruptcy, you pay one attorney fee and one court filing fee. Paying one attorney to file one joint bankruptcy is considerably cheaper than hiring two separate attorneys and filing two individual bankruptcies. But the reality is very often spouses in the midst of a messy divorce do not work well enough together to file a joint bankruptcy together. If you and your spouse are not on good terms and you do not think your spouse will cooperate or may be hiding assets, in order to protect yourself you may want to consider filing on your own.

If a divorce is filed, you and your spouse will need to divide up your joint debt. Dividing debts in a divorce can be time consuming and costly. But once one or both spouses file bankruptcy, the debt is gone. This simplifies your divorce process and less time is spent dividing debts in a divorce, which will save you time and help lower your costs of the attorney fees.

Instead of filing bankruptcy, some spouses try and reach an agreement wherein they amicably divide up any debt and everything is worked out between the two of you. This agreement is binding between you and your spouse but NOT to your creditors. Creditors do not recognize divorce decrees on division of debt. So, if after the divorce, your ex fails to pay your debts that he/she had originally agreed to pay, you will be liable for the debt and the creditors can come after you. If, you both owe a joint debt, and your spouse files bankruptcy, you'll be liable. If a creditor comes after you because your spouse failed to pay a debt he had agreed to pay in the divorce, you should be able to go after your spouse for repayment of that debt.

Filing a joint Chapter 7 Bankruptcy requires you to pass a Means Test. The Means Test involves calculating whether or not you qualify for bankruptcy- it looks to determine whether you can afford to repay all or a portion of your debt. Filing a bankruptcy before the divorce allows you to use a larger household size which can help you pass the Means Test and enable you to qualify for a Chapter 7 bankruptcy. Additionally, if you and your spouse maintain separate households, the expense of both households will be used in the calculations which could also be beneficial.

Occasionally, it may make sense to file bankruptcy AFTER a divorce. Since your household income is determined by what both you and your spouse earn, filing bankruptcy before your divorce may mean that your combined income is too high to qualify for a Chapter 7 bankruptcy. In that case, you and your spouse may qualify individually for filing a Chapter 7 bankruptcy after your divorce.

Also, if you or your spouse file a bankruptcy before finalizing a divorce case, an automatic stay will cause a delay in the divorce proceedings in order to let the bankruptcy to be processed, so it may make sense to wait on the bankruptcy.

Your bankruptcy attorney and your divorce attorney need to talk to assure that you make the right decisions regarding both filings.



The **flexibility**
to say "YES!"

The **strength**
to back it up.

Front Row: **Allen Weaver,**
Tim Flenner, Ben Palazzo

Back Row: **Justin Singer,**
Andy Meinhold, Eryn Medved

Your business lending team.
It makes a difference.

COMPANY OVERVIEW

Assets: **\$2.6 billion**

Deposits: **\$1.9 billion**

Capital: **\$230 million**

Employees: **Over 500**

Customers: **Over 80,600**

Commercial Banking Division

7402 Center Street • Mentor, OH

Phone: **(440) 205-8100**

www.ERIEBANK.bank

ERIEBANK[®]

A division of CNB Bank

Business
Experience Better Banking

Business owners like you deserve the highest level of personalized service. At ERIEBANK, your local commercial banker has the authority to make quick decisions. Access to capital is readily available by cutting through the red tape to get a loan processed quickly. *And that means*, you can concentrate on what's most important to you—growing your business and bottom line.

Big or small, ERIEBANK offers customized solutions to fit your unique situation. Call us today to schedule your personal meeting.

Commercial and Industrial Loans • Lines of Credit

Commercial Real Estate Acquisitions & Refinancing • Corporate Credit Cards

Treasury Management Services • Business Online & Mobile Banking



MEMBER FDIC



3RD ANNUAL FISH FESTIVAL & FISHING TOURNAMENT

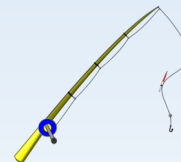
September 15, 16, & 17, 2017

Kiwanis Recreation Park

33 Mill Street, Painesville, Ohio 44077

440-479-5461

NEW
LOCATION



Meet & Greet

- ◆ Local Charter Boats
- ◆ Bait and Tackle Shops



Lake Perch & Walleye

Fish Dinners

Friday: 3 pm to 11 pm

Saturday: 11 am to 11 pm

Sunday: 11 am to 7 pm

Fishing Tournament

Saturday, September 16

Kids Fishing Derby 10 am – 12:30 pm

Steelhead Fishing Tournament

Saturday, September 16, 7 am – 4 pm

Sunday, September 17, 7am – 4 pm

Free Clinics

- ◆ How to make fishing flies
- ◆ Being able to ID different fish
- ◆ How to clean and fillet fish
- ◆ Fishing local rivers, best place in river to fish
- ◆ Best bait for which type of fish

Live Music - All 3 Days

Jungle Terry - Saturday and Sunday

This will be a smoke free event

There will be a smoking zone

Hosted by

Lake County Juvenile Diabetes Walk Family

A 501(c)3 Non-Profit



EASTERN LAKE COUNTY CHAMBER OF COMMERCE

2017

Autumn Road Rally

Benefitting the Eastern Lake County Chamber Scholarship Fund

SATURDAY, OCTOBER 7, 2017

STARTING LINE: Lake Metroparks—Fairport Harbor Beach Parking Lot

CHECK IN: Between 1:00 pm and 1:45 pm

START TIMES: Beginning at 2:00 pm—Pole Positions (start times) assigned

FINISH LINE: Secret Location—Teams must follow the clues & directions

Leave your helmets at home, your driving gloves, too. Its not how fast you go, its answering the clues.

Follow the clues, find the checkpoints, and master the games of skill.

The powers of observation will get you to the Finish Line, the Prizes and the Party!

Register your Team -two to four people per team. Penalty points for more than 4 people.

TEAM NAME _____

CAR Make _____ Model _____ Year _____

DRIVER _____

NAVIGATOR _____

Team MEMBER _____

Team MEMBER _____

Team MEMBER _____

Team MEMBER _____

\$25 per person [insert the payment terms]

Are you ready to **LiveHealthy?**



- Fitness, weight and nutrition assessments
- State-of-the-art exercise equipment
- Indoor track
- Rock climbing wall
- Basketball court
- Pools for recreation, laps and therapy
- Group exercise classes
- Sauna and steam rooms
- Clinics and lectures
- Wellness coaching
- Stress management

To sign up for email updates, visit:

**LakeHealth.org/
MentorWellnessCampus.**

LiveHealthy at the Mentor Wellness Campus is a fitness center unlike any other in the area. Our staff of exercise physiologists, athletic trainers, strength and conditioning specialists, health and wellness coaches, and dietitians will motivate you and help you succeed.

Open January 2, 2018

To save big, join before opening day.

Visit the **LiveHealthy** Membership Trailer:

Monday - Friday, 8 am to 7 pm

Saturday, 9 am to 12 pm

Corner of Market and Munson
Mentor, OH 44060



Lake Health
Mentor Wellness Campus



NEWS RELEASE



For Immediate Release
July 24, 2017

Media Contact: Julia Schick
jschick@laketran.com, 440-283-9888

Laketran promotes Ben Capelle to General Manager

LAKE COUNTY – At the Monday, July 24, 2017 Laketran Board of Trustees meeting, the board unanimously voted to promote Ben Capelle as the Laketran General Manager starting Tuesday, August 1, 2017. Capelle is currently the Deputy General Manager and oversees the daily operations and maintenance of Laketran's three core services, Local Routes, commuter Park-n-Ride service to Cleveland, door-to-door Dial-a-Ride and ADA service that includes Medicaid and Lake County Board of DD contracts for the Dial-a-Ride service.

"We had a strong list of applicants nationwide to fill the position of General Manager," shared board president Brian Falkowski, "We found Mr. Capelle's experience, knowledge of Laketran and the Lake County community to be the best fit for the future of Laketran. Five years ago Ben hit the ground running with new ideas to improve our service delivery while cutting costs, as Laketran's Operations Manager. I fully anticipate his momentum to continue and we will see many more accomplishments under his direction."

Joining Laketran in 2012, Capelle led the implementation of many technology upgrades including Laketran's GPS navigation and tracking, automatic bus locators, and online reservations for Dial-a-Ride. Capelle also spearheaded the transition to propane fuel for Laketran's Dial-a-Ride bus fleet which will yield an annual 35 percent fuel savings for the agency. Capelle was promoted to Deputy General Manager in April 2016.

Prior to joining Laketran, Capelle served as the General Manager of Clermont Transportation Connection in Clermont County, Ohio. Under his direction at Clermont, Capelle improved ridership by an average of 23 percent per year. His statewide experience also includes working as a bus operator at Kent State University and The Ohio State University, where he graduated. He worked at First Transit located in Cincinnati prior to Clermont Transportation.

"I am honored to be chosen as the next General Manager of Laketran. This organization has tremendous impact on the residents of Lake County and I look forward to the opportunity to meet the growing transit demand while maintaining our customer-focused service delivery," shared Capelle on his promotion.

Capelle will succeed Ray Jurkowski, who announced his retirement earlier this year and has served Laketran as General Manager since 2003.

Proudly serving over 750,000 riders each year, Laketran is Lake County, Ohio's regional public transit system offering Local Routes, door-to-door Dial-a-Ride, and commuter Park-n-Ride service to Cleveland.



1-888-LAKETRAN | www.laketran.com



Geneva Village
Skilled Nursing & Rehabilitation

YOU'RE INVITED!

Autumn Make + Take

Enjoy a stress-free evening of mingling, food, wine & raffle baskets! All while creating your own all-natural autumn themed products made with therapeutic grade essential oils.

THURSDAY SEPTEMBER 21ST AT 5:00PM
IN THE BALLROOM AT
THE LANTERN OF MADISON

2041 Hubbard Rd, Madison, OH 44057



Eastern Lake County
Chamber of Commerce

Lunch & Learn



Eastern Lake County Chamber of Commerce
&
Downtown Painesville Organization
Present:

The Importance of Small Business Succession Planning

- ⇒ Would your business survive if you weren't there to run it?
- ⇒ What's your "end game" with your Business?
- ⇒ Are you leaving your business to your family? To your children? If so, would you sell it to them? Gift it to them?
- ⇒ Do you want to sell your business? If so, how?
- ⇒ Are there things you should be thinking about?
- ⇒ Are there things that could be done to make that transition easier?
- ⇒ Have you planned for your future or the unexpected?

Wednesday, September 20, 2017

11:30 AM to 1 PM

Elks Lodge

723 Liberty St., Painesville, OH 44077

Guest Speaker: Josh Strickland, Dworken & Bernstein

Registration: \$20/person @ www.easternlakecountychamber.org

For more information or to register by phone contact:

**Linda Reed at 440.357.7572 or Linda@easternlakecountychamber.org
David Polakowski at 440.352.6004 or david@mainstreetpainesville.org**



FREE EDUCATIONAL SEMINAR

ENROLL NOW

Join us for a **FREE** half day workers' compensation seminar presented by industry experts. **The seminar qualifies for safety credit(s) to apply to safety council, group rating or group retro requirements.**

Join us

Date/time: Tuesday, September 26, 2017 – 9:00 a.m. to 12:00 p.m.

Breakfast will be provided

Location: Holden University Center – It is located directly across the street from Lakeland Community College. Holden University Center does not have its own address, so go to Lakeland Community College (7700 Clocktower Drive, Kirtland, OH 44094) and look for our seminar location across the street.

LAKE COUNTY



Chambers of Commerce

Topics

- Ohio Bureau of Workers' Compensation (BWC) updates – Discount programs, rebates and grants: Are you taking advantage of everything that is available? We will provide the latest information from BWC, outlining the various programs, available discounts and grant opportunities that you should be exploring. *Speakers: Todd Keserich, Assistant Vice President, Client Services, CompManagement; and Barb Lessman, Account Executive, CompManagement Health Systems*
- Workplace first aid programs – OSHA and ANSI requirements, first aid kits and resources to keep your program up to par. *Speaker: Kacy Beauman, Project Manager, CompManagement*

Register today

Registration is easy! Simply send an email to clientservices@chsmco.com and include the attendee name, your company name and BWC policy number. If you have questions, please contact Barb Lessman with CompManagement Health Systems at LessmanB@chsmco.com or call 216.214.6522.

BRIGHT IDEAS

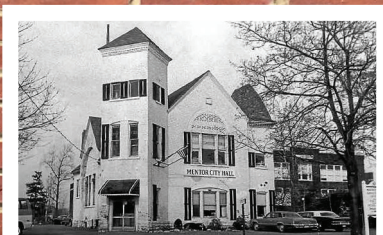
begin with...

compmanagement | compmanagement
health systems

800.825.6755 | 888.247.7799
www.compmgt.com | www.chsmco.com



Preserving the Strength of Our Community's History, and Our Clients Financial Future



8383 Mentor Avenue, Old Village Hall

Call Today For A Free Consultation:

440-510-1900 ■ 888-942-8111 toll free ■ nms-cpa.com

- | | | | |
|--------------------------|------------------------|----------------------|-----------------------|
| ■ Tax Return Preparation | ■ Tax Planning | ■ Wealth Management | ■ Business Valuations |
| ■ Accounting & Auditing | ■ Bank Loan Consulting | ■ Payroll Processing | ■ IRS Representation |

CHARDON ■ CHARDON SQUARE ■ MENTOR ■ TWINSBURG ■ MIDDLEFIELD



the Taste

Thursday, September 7

Main Street Downtown Painesville *5-10pm*

FEATURING: Andy's Last Band

over 14 Local Restaurants

pasta, wraps, BBQ, ribs, pizza

Beer Tent



end of the summer

Block Party!

Sponsored by:

ET Enterprise
Title Agency



PAINESVILLENOW

WWW.PAINESVILLENOW.COM

Top 5 key features of a dental network

Figuring out if your dental network offer the most value to your business and your employees can be tough. That's why we want to help you evaluate the network against these 5 features:

1. **Access to a large, national network** – With a network, bigger is better. Most employers want a network that offers a large number of dentists so that employees can receive care from the dentist they prefer.
2. **Network discounts** – Ask about network discounts. When members visit an in-network provider for covered services, they should receive savings based on the negotiated discounts between a carrier and the providers in their network.
3. **Low network turnover** – One sign of a good, stable network (and happy participating providers) is low annual network turnover. Look for a network with annual turnover of 2 percent or less.
4. **Credentialing and re-credentialing** – Check to see how carriers handles credentialing and how often dentists are re-credentialed. This ensures providers maintain their licenses, are insured and meet guidelines for quality and professional standards.
5. **Recruitment commitment** – A dental carrier should be committed to growing their network. If your clients have access issues in specific areas, find out whether the carrier will use target recruiting to help meet access objectives and if they offer recruitment guarantees.

[Learn more](#) about Anthem Dental's expansive, national network.

Anthem Blue Cross and Blue Shield is the trade name of Community Insurance Company. Independent licensee of the Blue Cross and Blue Shield Association. ANTHEM is a registered trademark of Anthem Insurance Companies, Inc. The Blue Cross and Blue Shield names and symbols are registered marks of the Blue Cross and Blue Shield Association.

This information is brought to you through collaboration between your chamber, NOACC and Anthem Blue Cross and Blue Shield

Connecting the dots for the bigger picture in health care

Great things often start with a simple idea, like connecting the dots. That's what our Whole Health ConnectionSM approach to health care is all about.

How it works. We connect the dots in health care — medical, drug, dental, vision, life and disability. Each time a member sees a doctor or dentist or fills a prescription, it's like a dot on a page. Connecting all those dots gives us the bigger picture — a more complete health profile of the whole person.

The [entire article](#) is attached to this email. [See how our products work together for a bigger, more holistic view of health care.](#) Or talk to your Anthem sales rep.

This information is brought to you through collaboration between your chamber, NOACC and Anthem Blue Cross and Blue Shield

*Other Anthem articles always available at: <http://www.noacc.org/resources/vendor-resources/health-insurance-articles/>



LAKECOUNTYSAFETYCOUNCIL

Date: Friday, September 15, 2017

Topic: Overall Machine Shop Safety

Speaker: TBD

Time: Registration: 11:15 a.m.

Lunch & Program: 11:30 a.m. to 1 p.m.

Location: Villa Croatia Event Venue & Party Center
(The Croatian Lodge)

34900 Lakeshore Blvd., Eastlake, OH 44095

Cost: Members: \$20 Non-Members: \$25



**Visit our website
for an update**

www.lakekidzbiz.com



**Visit our website
for a list of upcoming events**

<http://lakecountyfuel.com>

CEO EXPERIENCE17

Shaping a sustainable future



Tonight, more than 100 children and adults will experience homelessness in Lake County.

Of them, up to 50 will find a safe place to sleep at Project Hope for the Homeless.

On Sept. 27, you can, too.

Join us at **CEO Experience 17**, an exclusive event designed to show Lake County leaders the life-changing services offered at 25 Freedom Road.

From **11:30a to 1p**, enjoy a tour of the shelter, lunch, and talk from a former guest whose life has been changed because of the community support for Project Hope.

The \$25 registration fee will provide services to neighbors in need.

Follow the link below to register by **Sept. 22, 2017**

<https://ecumenical-shelter-network-of-lake-county-inc.networkforgood.com/events/3368-the-ceo-experience>

S2S 2017
From seed to sustainability



M A Hurley Ins Agcy Inc
 Mary Anne Hurley, Agent
 8 N State Street, Suite 206
 Painesville, OH 44077
 Bus: 440-357-1133

State Farm, Bloomington, IL
 1211999



American Standard
"It's better to go American"
 License #17717



• Heating • Air Conditioning •
 156 W. Main Street • Madison, Ohio 44057

Jeffrey E. Lynn President
 Cell: 440.343.3573
 Email: jeff@penguinmechanical.com

440.428.4666
 440.942.1207
 Fax: 440.428.5560
 1.800.833.4328



Together
 we can
 make a
 difference!

Become a
BIG!

Find out more at:
www.bbbsneo.org



Even with all the Health Care Reform Changes you
 can still get a discount through your local chamber

As a chamber member with 2-50 employees, you can get a discount on any health plan from Anthem Blue Cross and Blue Shield – including industry-leading HSAs, HRAs and HIAs.*

Despite the ongoing changes and confusion surrounding health care reform, your local chamber continues to offer employer insurance options with a 1.4% discount exclusively for chamber members!

Call your insurance broker, your chamber or NOACC at 1-866-466-4622 or go to www.noacc.org for more information. To request a free quote go to www.chambersaver.com/noacc.



*Discount only applies to Chamber members who do not already have Anthem insurance. Anthem Blue Cross and Blue Shield is the trade name of Community Insurance Company. An independent licensee of the Blue Cross and Blue Shield Association. © Anthem is a registered trademark. The Blue Cross and Blue Shield names and symbols are the registered marks of the Blue Cross and Blue Shield Association.

NOACC/CRAD 01/14



*Meeting Your Accounting and
 Tax Needs Year Around.*

SHARON L. GREEN

CERTIFIED PUBLIC ACCOUNTANT

Sharon@AccountingYearRound.com
 440-867-2451 Fax: 216-504-4017
 1 Victoria Place, Suite 301, Painesville, OH 44077

WHO'S LOOKING OUT FOR YOU

Sievers is your Best Choice for 24/7 Protection

Commercial	Residential	Industrial
Security Systems	Cameras & Recorders	
Fire & Smoke Protection	Card Access	
Medical Alert	24...Hour Monitoring	

440.352.4800 Call Judy Armington

MORSE van lines



Weekly Trips to Florida
Over 50 Years in Business
(440) 352-2600

www.MorseVanLines.com / info@MorseVanLines.com

We take pride in your turf!

Turf Pride
LAWNCARE SERVICE
440.516.8873
www.TurfPrideLawncare.com

• Fertilization • Weed Control • Core Aeration
• Grub Prevention • Perimeter Pest Control

MaryAnn's
FAMILY HEARING Come Hear With Us!
"We Care, You'll See!"

We have
Certified and
Licensed
Audiologists
to Serve You.



Diagnostic
Hearing Tests,
Hearing Aids,
Repairs,
Supplies &
More

MaryAnn Bencin, M.A., Audiologist
Dr. Amanda Barbur, Audiologist

440-357-HEAR (4327)
1701 Mentor Avenue, Suite 5, Painesville Township, 44077
MaryAnnsFamilyHearing.com

Simply Free Checking

Money savings options for
you or your business.

And a free gift.



Visit Us Today!

Concord Branch
7595 Crile Road
Concord, OH 44077

FFL.net f t in



 EQUAL HOUSING LENDER • MEMBER FDIC



Lake-Geauga Recovery Centers, Inc. provides a wide range of services for adults whose lives have been affected by their own or another's use of alcohol or drugs, by problem gambling or by mental illness.

Mentor Office
9083 Mentor Avenue
Mentor, OH 44060

Chardon Office
209 Center St., Unit E
Chardon, OH 44024

Painesville Office
134 S. St. Clair
Painesville, OH 44077

If you have questions about addiction or recovery, please call
Lake-Geauga Recovery Centers at **(440) 255-0678**
or visit our website at www.lgrc.us

